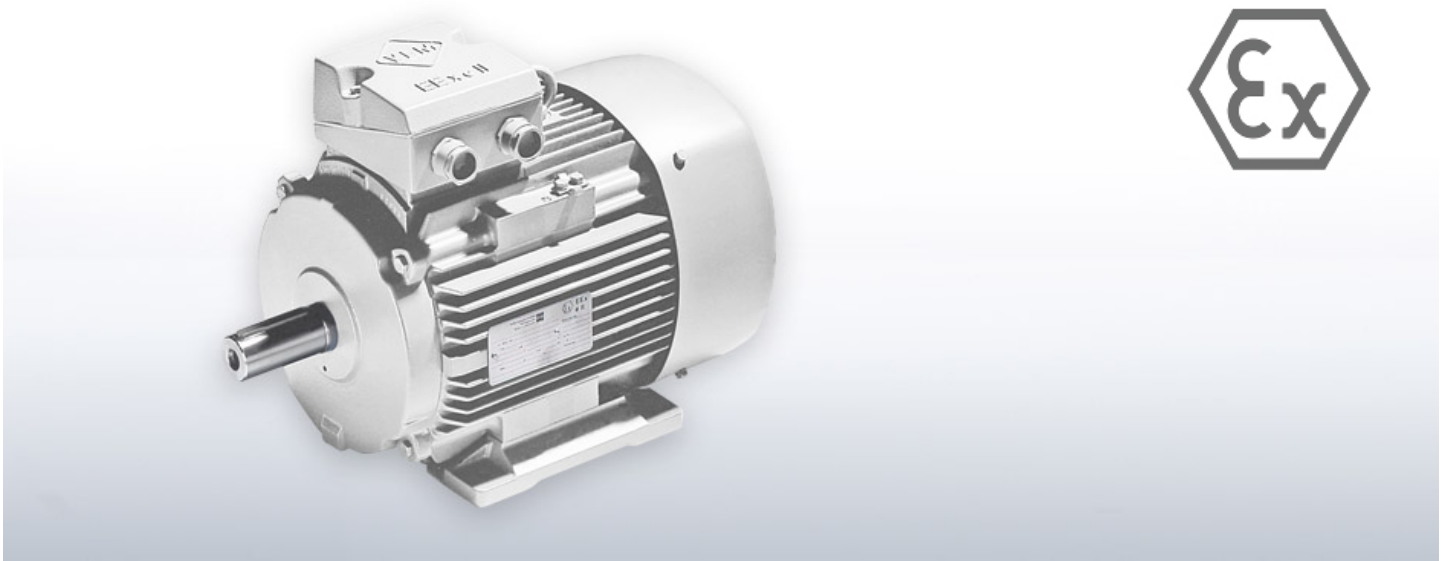


# Low-voltage Explosion-proof motors



[Product information](#) [Downloads](#) [Electronic catalogue](#)

Explosion protection according to EN 60079-0, 60079-1, 60079-7 or according to EN 60079-15/IEC 60079-15 or EN 61241 and according to ATEX 114 (95, 100a)

## Features

- energy-efficient and non-polluting
- design according to EN 60034 (IEC 60072)
- mounting dimensions or allocation of output according to DIN 42673, 42677, or progressive
- rugged, low-vibration gray cast iron design

## Technical details

Frame sizes	56 – 400 (450)
Power output range	0.06 – 710 kW
Types of ignition protection	<ul style="list-style-type: none"><li>• Increased safety "e" (Ex e IIC T3 Gb)</li><li>• Flameproof enclosure "d(e)" (Ex d(e) IIC T4 Gb)</li><li>• Non sparking "n", (Ex nA IIC T3 Gc)</li><li>• For use in Zone 21, ( Ex tb IIIC T125°C Db)</li><li>• For use in Zone 22, ( Ex tc IIIB(C) T125°C Dc)</li></ul>
Efficiency classes according to IEC 60034-30	With due regard to VO(EG) 640/2009, these motors are available in the following design configurations: <ul style="list-style-type: none"><li>• without efficiency classification,</li><li>• Standard Efficiency IE1,</li><li>• High Efficiency IE2, and</li><li>• Premium Efficiency IE3</li></ul>
Speeds	3,000; 1,500; 1,000; 750 r.p.m., pole-changeable designs are available upon request
Types of protection	IP 55, optionally IP 56, IP 65 according to EN 60034-5 (IEC 60034-5)
Design type	IM B3, IM B35, IM B5, IM B14, IM B34 and derived designs according to EN 60034-7

---

Types of cooling

According to EN 60034-6 (IEC 60034-6)

- self-ventilated, IC 411
- forced-ventilated, IC 416
- unventilated, IC 410

---

Coolant temperature / altitude of site

As a standard feature, -20°C through +40°C, altitude of site 1,000 m above sea level, deviating temperatures or altitudes of site are available upon request

---

## Contact

Please select

[Find Sales Locations](#)

Contact us now