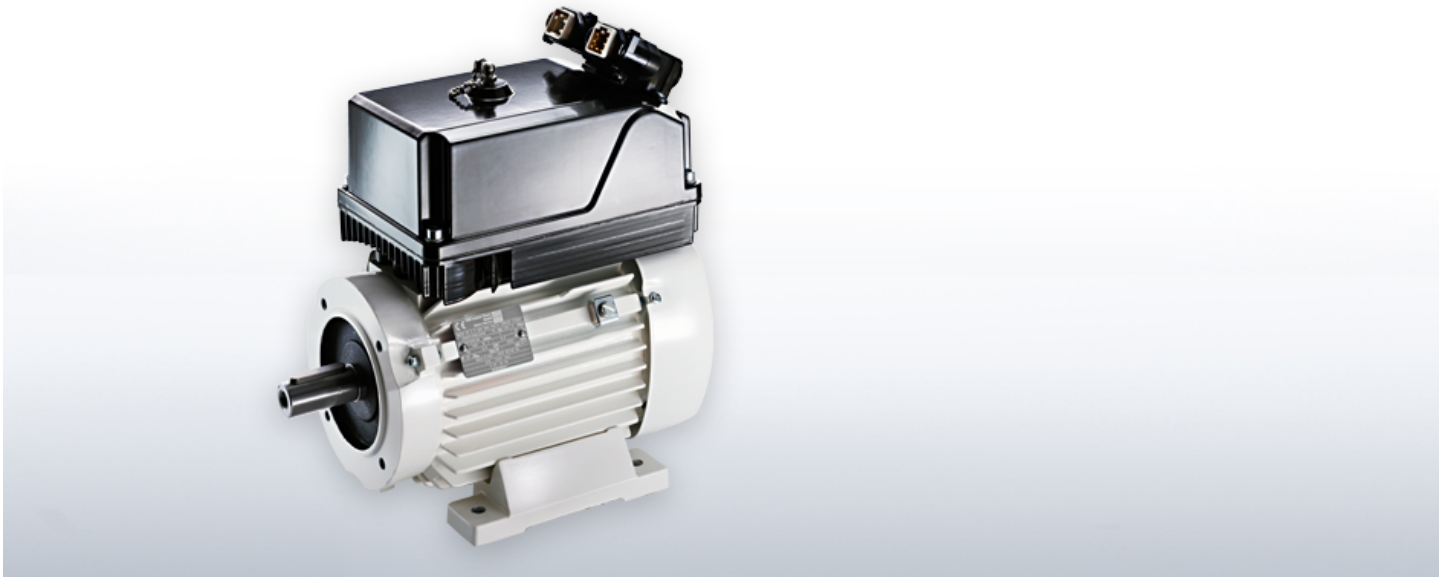


Low-voltage Motors for railway drives



[Product information](#) [Downloads](#) [Electronic catalogue](#) [Memory design](#)

Motors (mainly fan motors) intended for use in railway vehicles shall be designed and manufactured according to railway specifications and standards.

For railway specifications or standards, specific conditions to be taken into consideration include shock, vibration, selection or activation via inverter, or high temperatures.

Technical details

Mode of operation	Converter operation S9
Types of protection	IP 55, optionally IP 56, IP 65 according to EN 60034-5 (IEC 60034-5)
Design type	IM B3, IM B35, IM B5, IM B14, IM B34 and derived designs according to EN 60034-7
Types of cooling	According to EN 60034-6 (IEC 60034-6) <ul style="list-style-type: none">• self-ventilated, IC 411• forced-ventilated, IC 416• unventilated, IC 410
Coolant temperature / altitude of site	As a standard feature, -20°C through +40°C, altitude of site 1,000 m above sea level, deviating temperatures or altitudes of site are available upon request
Transponder	Optional, RFID System iID@2000 (13.56 MHz based on ISO 15693)

In addition to the low voltage motors in special rail version our portfolio also includes highly efficient traction motors, main and auxiliary operating generators and their regulating systems. These are used among others in:

- electric and diesel-electric locomotives
- multiple unit trains
- metros
- trolley/ hybrid buses
- trams and
- vehicles for work

Further information, as well as, the contact details of your contact person Mr. Hans-Georg Becker, you will find in the section **Transportation**.

Contact

[Find Sales Locations](#)

Contact us now