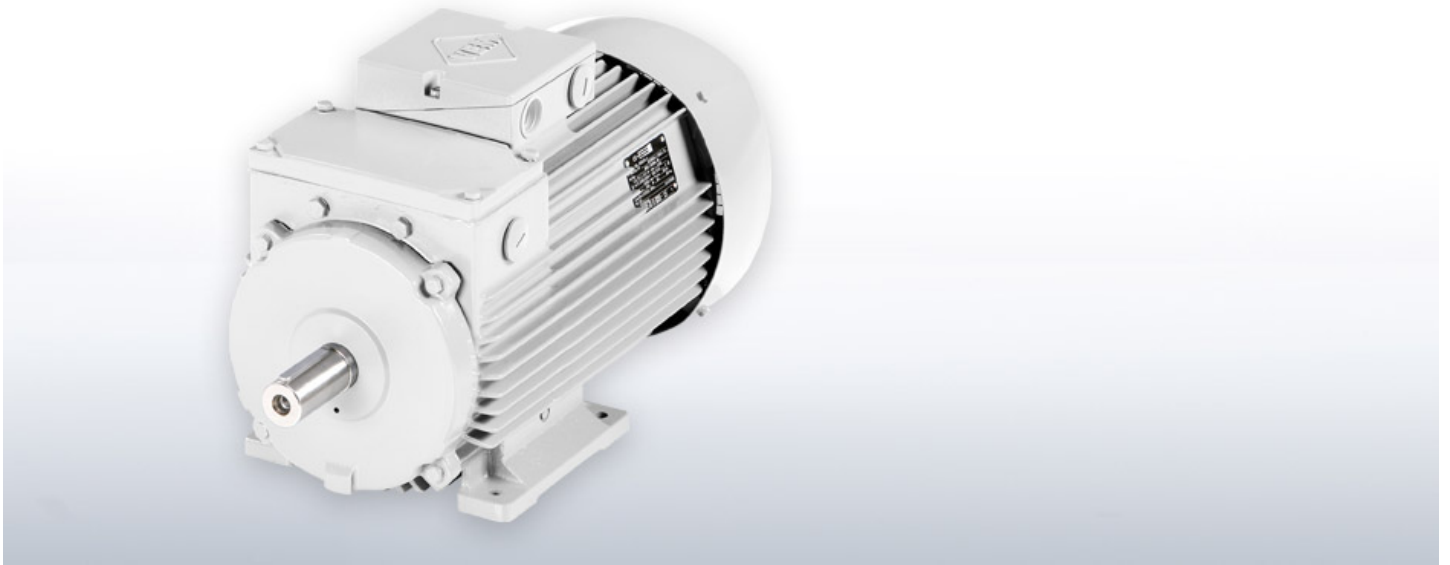


Low-voltage Slip-ring induction motors



[Product information](#) [Downloads](#) [Electronic catalogue](#) [Memory design](#)

Slip-ring induction motors are used in many industry sectors, now as before. Owing to their properties, they have a major effect on the effectiveness of production. VEM three-phase asynchronous motors with slip-ring rotors combine the benefits of this drive solution with the extraordinary know-how of VEM in terms of their manufacture.

Due to their large range of modification with regard to customer applications, these motors can be optimally adjusted and tuned; they are especially suited for heavy starting applications such as on instable mains or power supply systems.

Technical details

Frame sizes	132 – 315
Power output range	2.2 – 315 kW
Mode of operation	Continuous duty, S1 and modes S2, S3 and S4/S5
Speeds	1,500; 1,000; 750; 600; 500 r.p.m.
Types of protection	IP 54, IP55, optionally IP 56, IP 65 according to EN 60034-5 (IEC 60034-5)
Design type	IM B3, IM B35, IM B5 and derived designs according to EN 60034-7
Types of cooling	According to EN 60034-6 (IEC 60034-6) <ul style="list-style-type: none">• self-ventilated, IC 411• forced-ventilated, IC 416• unventilated, IC 410
Coolant temperature / altitude of site	As a standard feature, -20°C through +40°C, altitude of site 1,000 m above sea level, deviating temperatures or altitudes of site are available upon request
Transponder	Optional, RFID System iID@2000 (13.56 MHz based on ISO 15693)

Contact

Please select

Please select

Australia

Austria

Belgium

Brazil

Contact us now

Brunei

Cambodia

Canada

Find Sales Location

