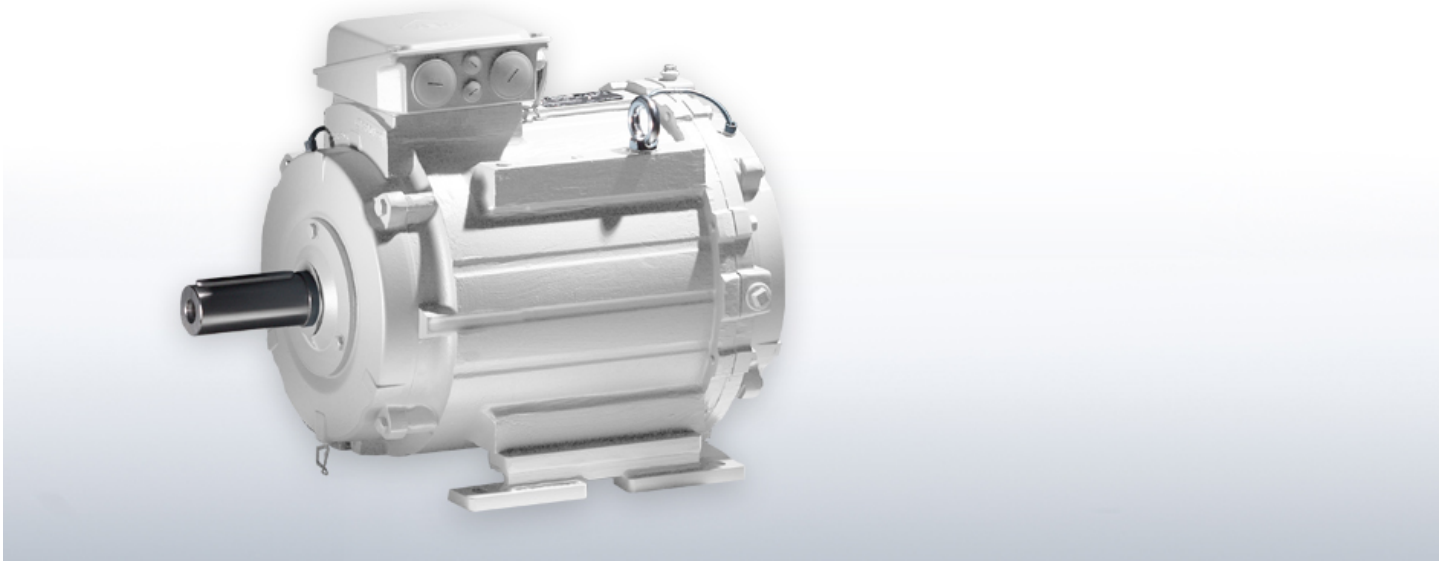


Low-voltage Water-cooled motors



[Product information](#) [Downloads](#) [Electronic catalogue](#) [Memory design](#)

Features

- Energy-efficient and non-polluting.
- The motors up to and including frame size 280 are gray cast iron with cast integral cooling tubes, and are designed as a double-wall welded steel structures as from frame size 315.
- The terminal boxes, end shields, winding insulation, type of protection and colour scheme conform to those of the standard design configuration.
- The benefit of water cooling is reduced noise emission as compared to surface cooled three-phase asynchronous motors of similar output and frame size.
- The waste heat of these motors is dissipated without any effect on the environment, and their cooling principle facilitates higher output and best vibration damping while the design of these motors remains compact.

Technical details

Frame sizes	225 – 355
Power output range	37 – 500 kW
Efficiency classes according to IEC 60034-30	With due regard to VO(EG) 640/2009, these motors are available in the following design configurations: <ul style="list-style-type: none">• without efficiency classification,• Standard Efficiency IE1,• High Efficiency IE2,• Premium Efficiency IE3
Speeds	3,000; 1,500; 1,000; 750 r.p.m., pole-changeable designs are available upon request
Types of protection	IP 55, optionally IP 56, IP 65 according to EN 60034-5 (IEC 60034-5)
Design type	IM B3, IM B35, IM B5 and derived designs according to EN 60034-7
Types of cooling	According to EN 60034-6 (IEC 60034-6)

- water-cooled, IC 31W

Transponder

Optional, RFID System iID®2000 (13.56 MHz based on ISO 15693)

Contact

Please select

[Find Sales Locations](#)

Contact us now